

ENTRY FEES

Shemer Member:

\$30 for one entry, \$35 for two entries.

Non-Member:

\$40 for one entry, \$45 for two entries.

Entry fees are non-refundable.

MEMBERSHIP

- Students (*under 21*) - \$25 per year
- Individuals/Artists - \$50/year
- Family (up to 4 members)- \$75/year

QUESTIONS?

Any questions should be directed to exhibitions@shemerartcenter.org or cassie@shemerartcenter.org with the subject line "INSIDE PERSPECTIVES" or by calling the Shemer Art Center at 602-262-4727.

Hours

Tuesday - Saturday, 10 am - 3 pm
Closed Sunday and Monday *

* with exception of weekend events and holidays

www.shemerartcenter.com

facebook.com/shemerart

@shemerart



S H E M E R
a r t c e n t e r

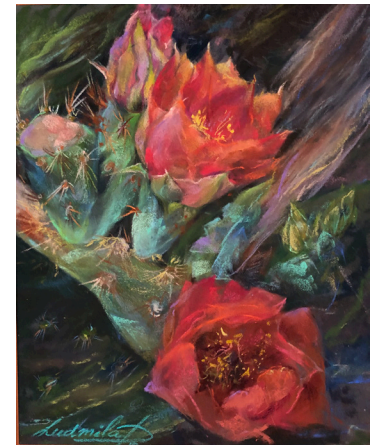
602.262.4727 | 5005 E Camelback Rd | Phoenix, AZ 85018
shemerartcenter.org | info@shemerartcenter.org

The Shemer Art Center & Museum prohibits discrimination on the basis of race, ethnicity, national origin, sex, religion, sexual orientation, or disability in its services, programs, and activities. If you need to request accommodations for special needs, please contact the Shemer staff by calling 602-262-4727.

The Shemer does not carry accident insurance to cover participants.
Involvement AND any activity is done at the participant's own risk.



S H E M E R
a r t c e n t e r



"Red Cactus" by Ludmila Demich

CALL TO ARTISTS
EXHIBITION

INSIDE PERSPECTIVES

*An annual exhibition showcasing artwork created by
the instructors, students and team members
of the Shemer Art Center.*

JULY 16 - AUGUST 21, 2025

Artist Reception: July 17, 2025

5:30 - 7:30 pm

ABOUT THE EXHIBITION

The Shemer Art Center is now accepting artwork from its students, instructors, and team members for its 2025 Inside Perspectives exhibition. This insightful and diverse exhibition showcases, each year, the growth and talent of the students, instructors, and team members who together bring art to life every day at the Shemer Art Center.

SUBMISSION GUIDELINES

- Instructors must have taught or be actively teaching a class or workshop at the Shemer Art Center within the past 12 months.
- Students must have been enrolled in a class or workshop at the Shemer Art Center within the last 12 months, and must have created the artwork(s) they are submitting in the class or workshop.
- Team members must be actively working at the Shemer Art Center and must submit work that has been created in the last 12 months.
- Artists are asked to submit up to two works in digital format that have been juried by their instructor.
- Artists may include one detail image for each entry if needed.
- Each image submitted should be labeled in this format:

LastNameFirstInitial_
ImageName_
Medium_
Year Created_
HxWxD.jpg

- To enter you must use the link to the Google Form below. This link can also be accessed on our website:

<https://forms.gle/985f5PzKnRXqDg1m7>

Delivery of artwork:
July 8, 2025 | 1 - 4 pm

Inside Perspectives

*An annual exhibition showcasing artwork
created by the instructors, students and team members
of the Shemer Art Center.*

July 16, 2025 - August 21, 2025

EXHIBITION DETAILS

- Artist must be an Arizona resident at least 18 years old.
- Artwork must be original.
- Artwork cannot exceed 5 feet in height, 4 feet in width.
- Artwork cannot exceed 100 lbs (pedestal display) or 50 lbs (hanging display).
- Larger, more complex artworks may require installation assistance by the artist.
- Artwork accepted for hanging must be ready to hang with **a wire on back**, taut, approximately 1/3 of the way from the top so that wire does not show or pull above frame when hung. No entries without wire will be accepted.
- Canvases should be wrapped or framed without glass. Art framed under glass must use museum-quality, plexiglass or single-strength glass (no non-glare).
- Artwork submitted cannot have been previously included in an exhibition at the Shemer Art Center.

SALES

Artists who sell their work should expect to receive 70% of the sale price, with 30% retained by the Shemer Art Center. All works are encouraged to be available for purchase. However, if works are not available for sale, please indicate NFS (not for sale) on your entry.

You may pay online, call with payment, or mail check to:
Shemer Art Center | 5005 E. Camelback Road | Phoenix, AZ 85018
If paying by check, make payable to Shemer Art Center

MARK YOUR CALENDAR

- **JULY 8, 2025**
Images of entries and entry form due.
- **JULY 11, 2025**
Artwork dropped off at the Shemer Art Center between 1 and 4 pm.
- **JULY 16, 2025**
Exhibition Opens
- **JULY 17, 2025**
Artist Reception 5:30 - 7:30 pm
- **AUGUST 21, 2025**
Exhibition concludes.
- **AUGUST 21, 2025**
Pick-up artwork from the Shemer Art Center between 3 - 6 pm.

ACCEPTED ARTISTS' RESPONSIBILITIES

If an artist's entry is chosen for this exhibition then the artist agrees to:

- allow use of his or her likeness and biographical information for publicity purposes by Shemer.
- be responsible for transportation of work to and from Shemer.
- assist with installation as needed.
- assist with promoting the exhibition through the artist's network and social media channels.

Artist also then agrees to submit (upon acceptance):

- a digital photograph of artist.
- a short statement (50 words about the artist and 50 words about the artwork).

ADDITIONAL INFORMATION

All artwork will be insured by the Shemer Art Center for the duration of the exhibit. Prior arrangements for the installation of large-scale sculpture must be made in advance and approved by the Exhibition Manager and Executive Director.

Opening Reception
July 17, 2025 | 5:30 - 7:30 pm