



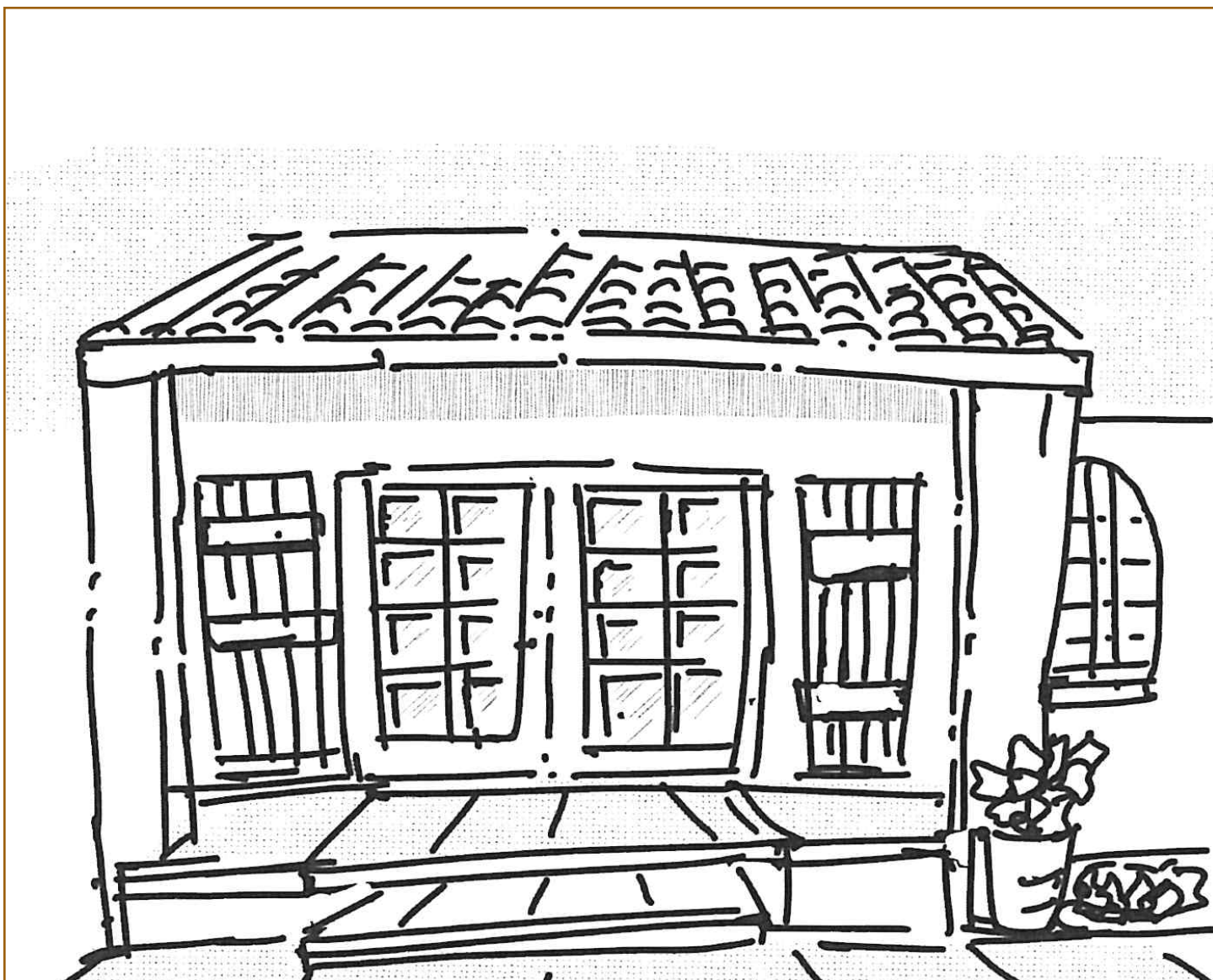
# shemer family art activities

---

creativity just for you!

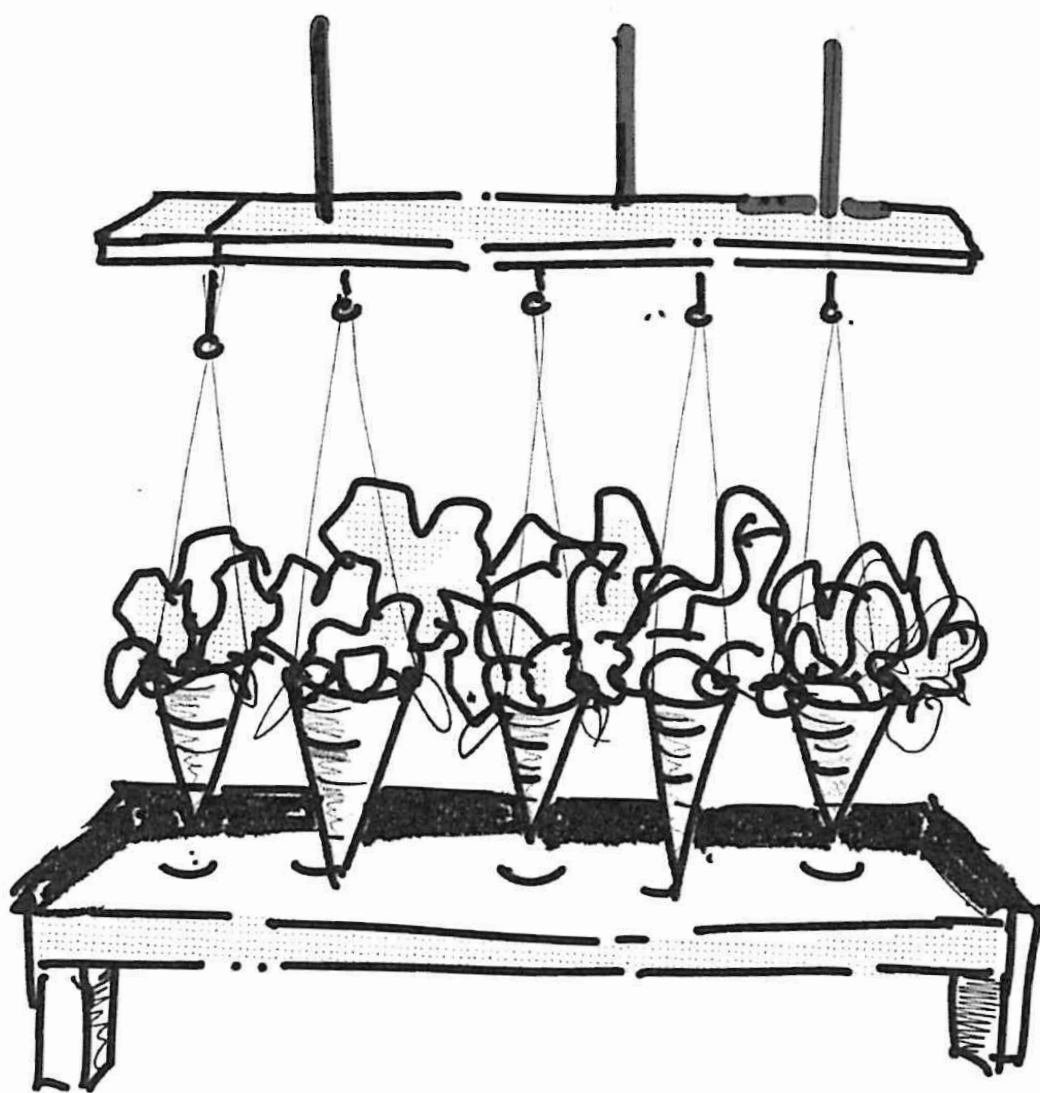


S H E M E R  
a r t c e n t e r



# The Shemer Art Center

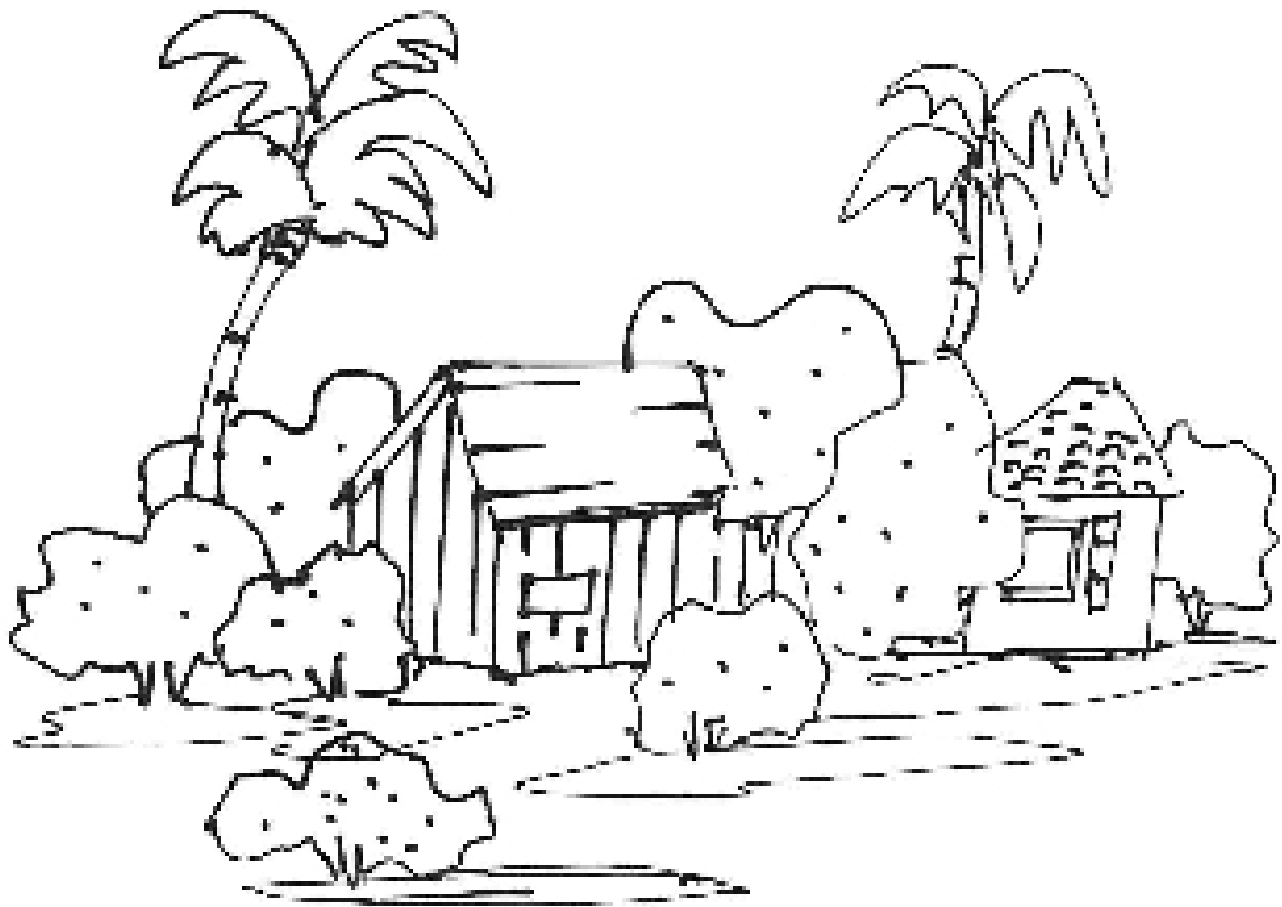
Sketched by Arizona Artist and  
Shemer Art Center Instructor John Erwin



# Hanging Garden Sculpture

Created by Arizona Artist Laurie Lundquist

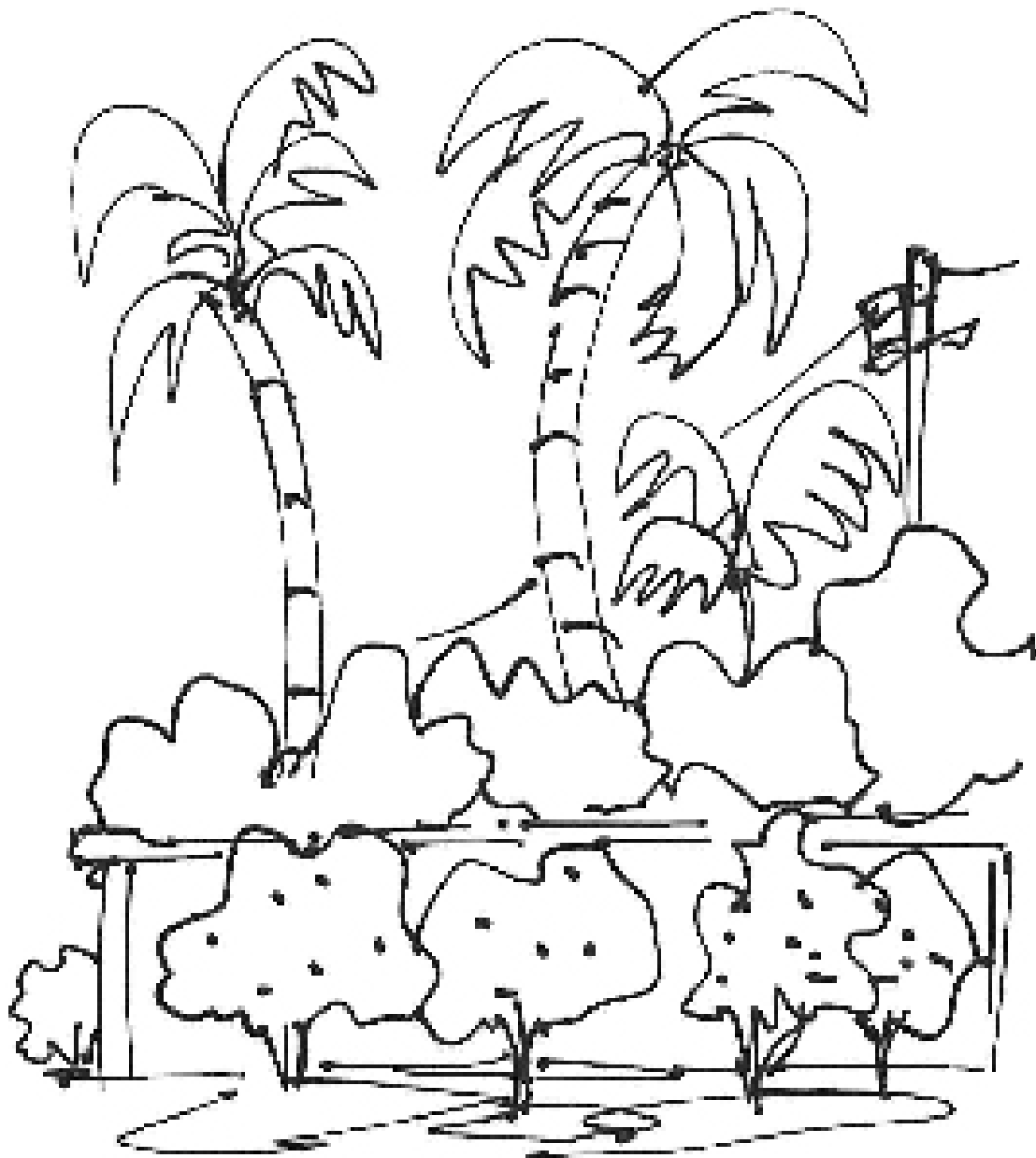
Sketched by Arizona Artist and  
Shemer Art Center Instructor John Erwin



# The Old Fruit Stand

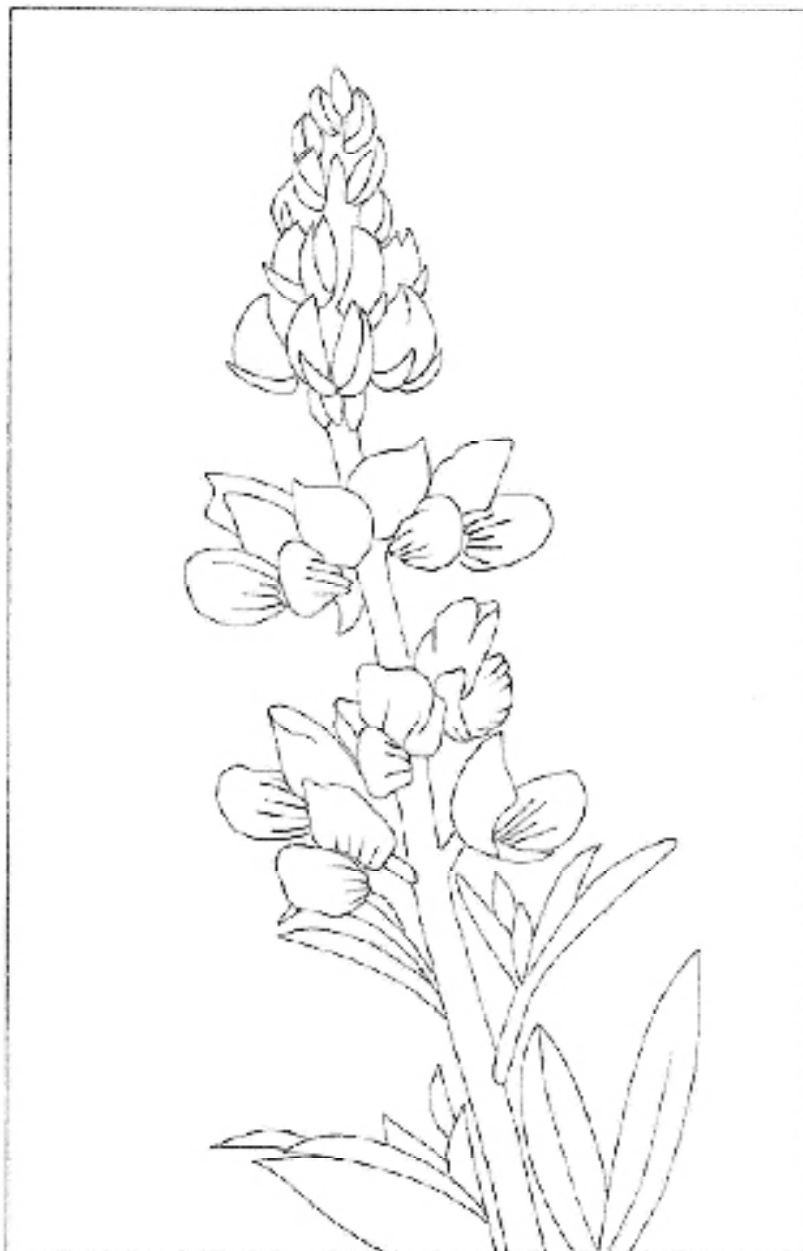
Sketched by Arizona Artist and  
Shemer Art Center Instructor John Erwin





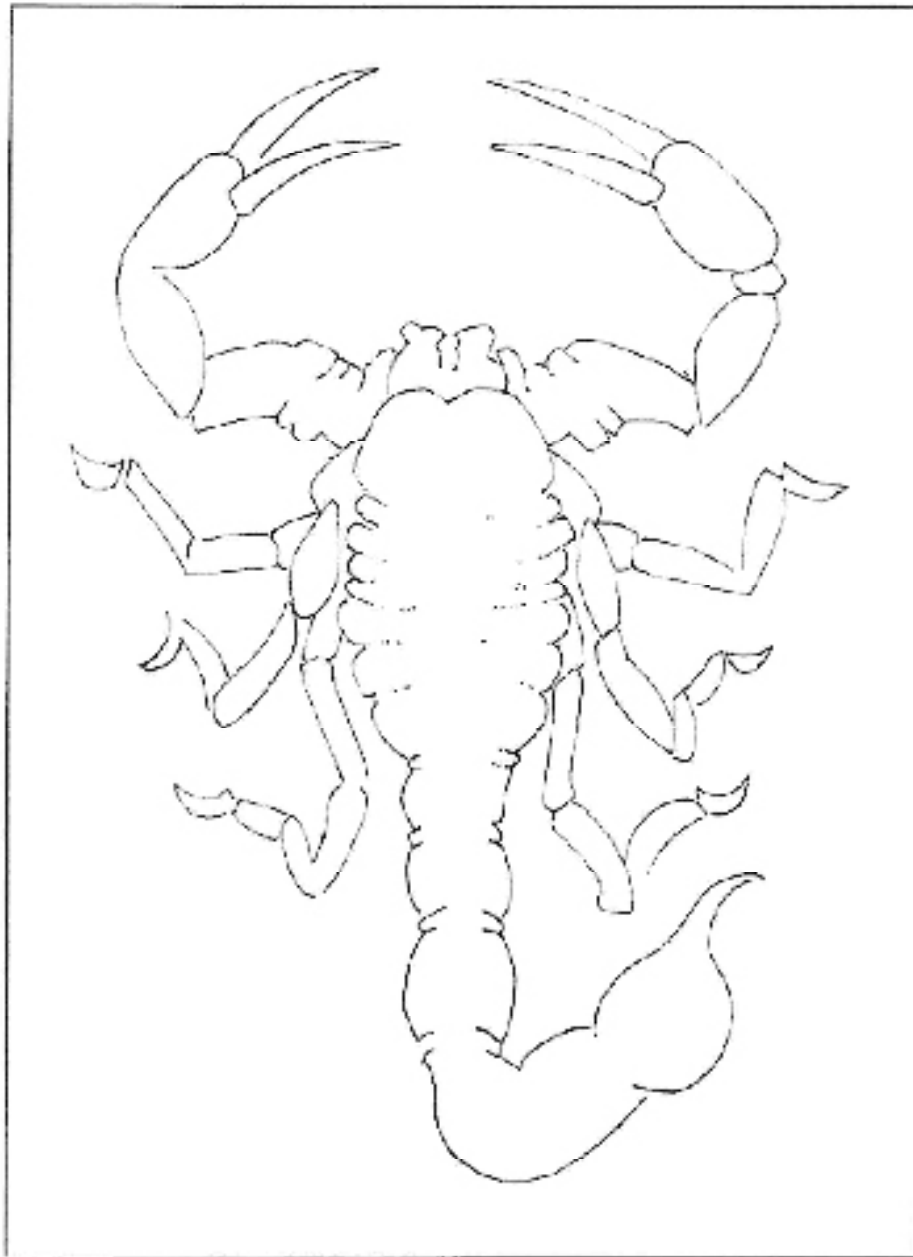
## Shemer Orchard & Palm Trees

Sketched by Arizona Artist and  
Shemer Art Center Instructor John Erwin



## Lupine Blossom

Drawn by Arizona Artist and  
Shemer Art Center Instructor Elliott Everson



## Arizona Scorpion

Drawn by Arizona Artist and  
Shemer Art Center Instructor Elliott Everson



## Desert Tortoise

Drawn by Arizona Artist and  
Shemer Art Center Instructor Elliott Everson





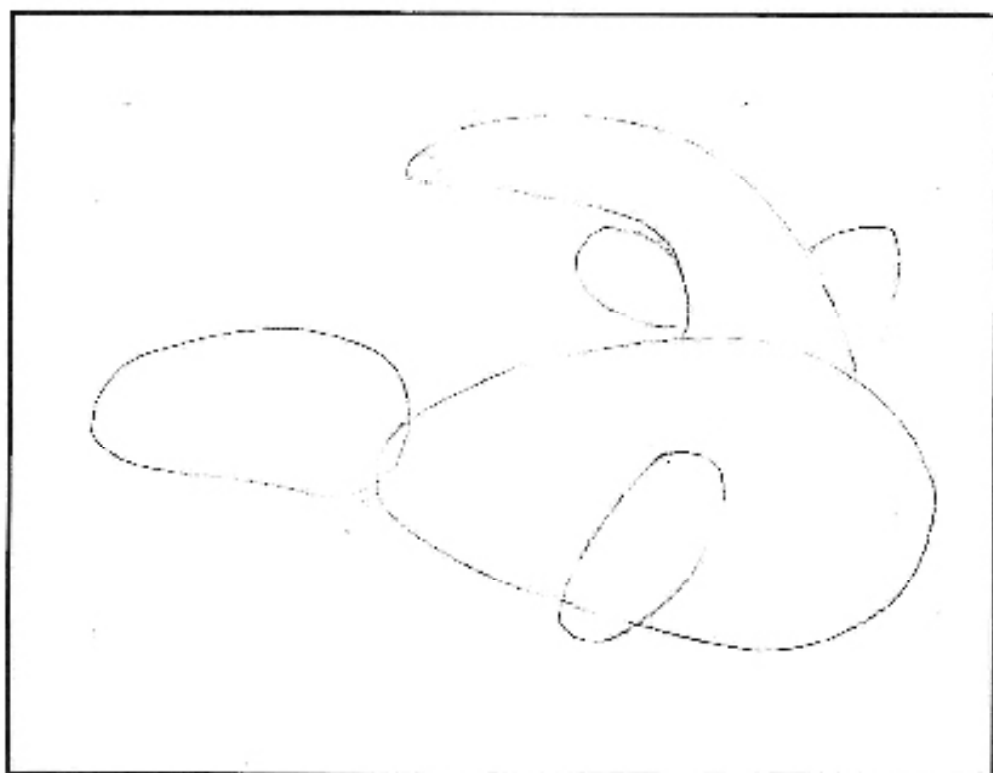
## **Gila Monster**

**Drawn by Arizona Artist and  
Shemer Art Center Instructor Elliott Everson**

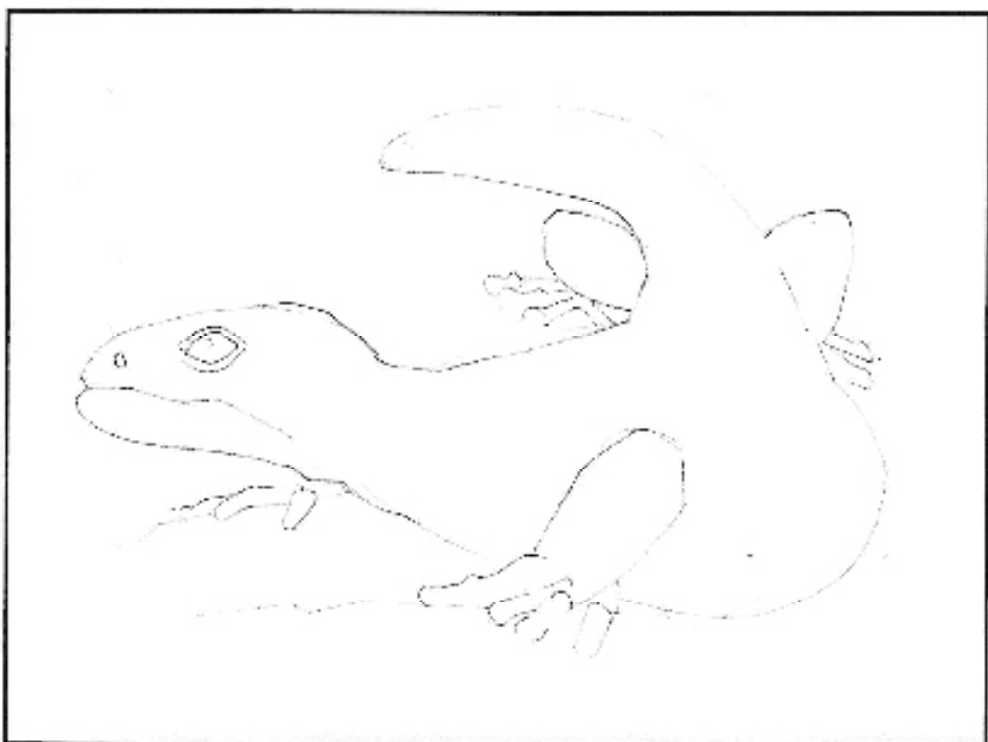
# DRAWING LESSON

Gila Monster Step-By-Step

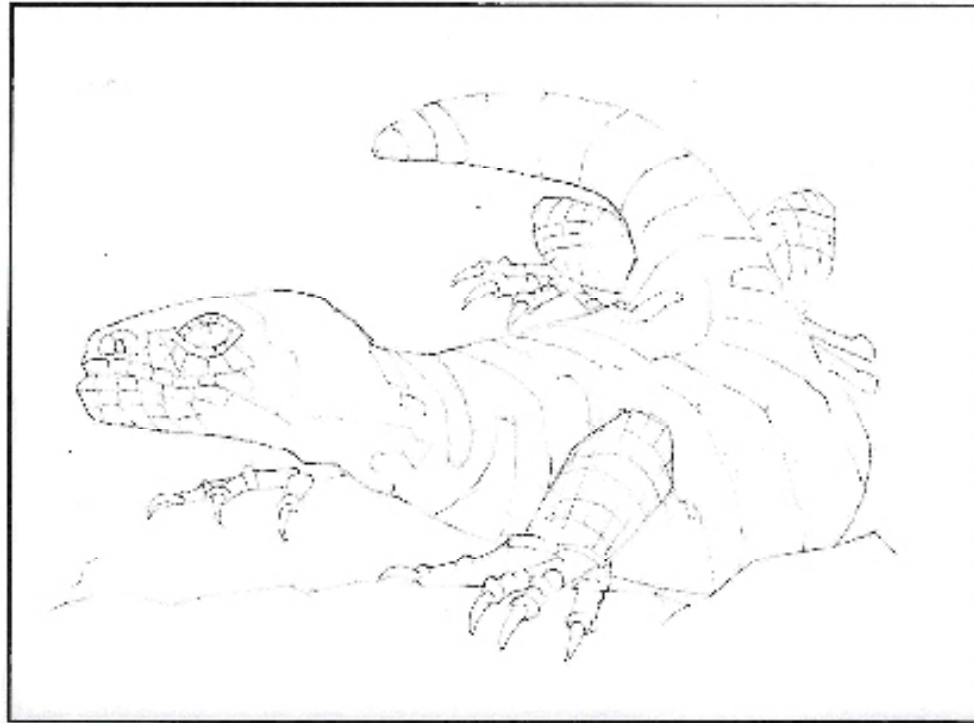
Created by Arizona Artist and  
Shemer Art Center Instructor Elliott Everson



Start sketching in the basic shapes of the body, head, tail and a hint of legs.



Add a few details like the eye, some more detail on the feet. I think I made it a bit too chunky, you might want to trim the belly a little.



Indicate where the stripes will go and a grid pattern that we will use to suggest scales. The stripes should follow the curve of the body to help define the form.

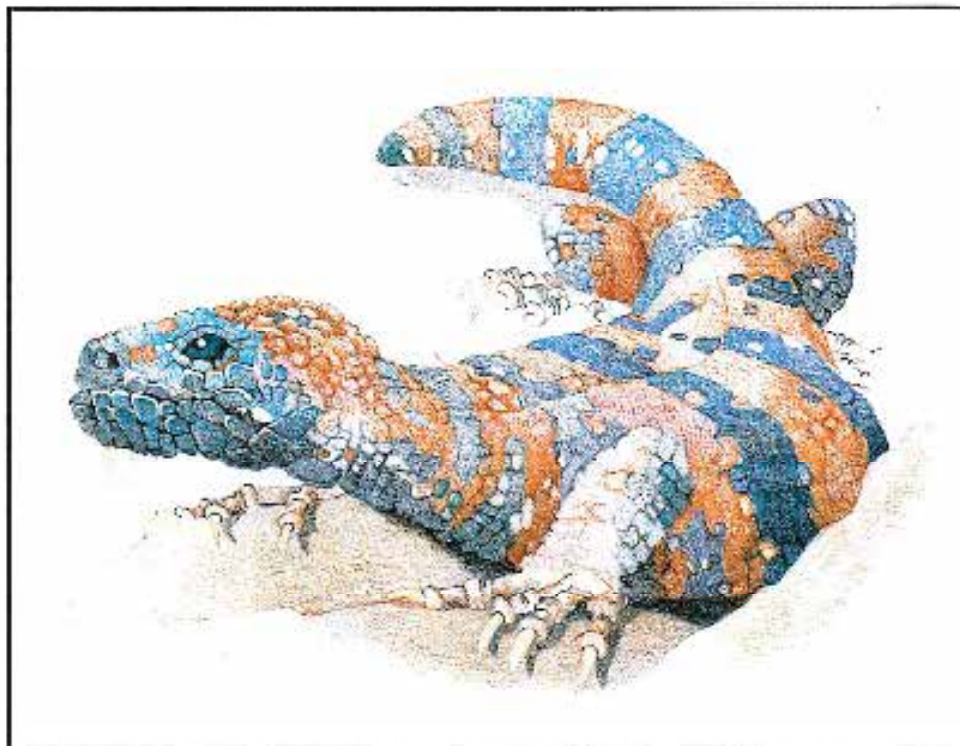


Finally, color! Using orange and a dark blue lay in the alternating stripes. Round off the corners on the grid pattern to look more like scales. We will use dark grey or a light application of black to darken the blue and add shading. Dark brown on the orange.





Moving along, keep filling in the blues and orange and use the grey, black and brown to shade. Light application of multiple layers allows easier blending of color. We threw a touch of pink just for fun and started creating some dirt or rocks using beige, reddish brown and light grey.



Almost done. Keep layering, color and darkening, adding shadows and suggesting more scales and ground. Used a very sharp black pencil to outline and define some of scales and plates. Especially in the face.



The Shemer Art Center was the very first home built in Arcadia, in 1919. In July 1984 Martha Evvard Shemer purchased the twice-renovated, Sante-Fe mission-style home and land. Working with Mayor Terry Goddard, she donated the home to the City of Phoenix.

Today, the Shemer Art Center serves as a “home for the arts” providing a unique and inviting atmosphere for residents and visitors to enjoy and learn about visual art through fun and affordable classes, lectures, workshops, exhibits and events. Areas of instruction offered year-round by professional teaching artists include drawing, painting, printmaking, sculpture, ceramics, mixed media, photography, metals and jewelry-making.

Additional features include an on-site gift shop plus an outdoor sculpture garden, both featuring beautiful, one-of-a-kind works of art created by some of Arizona’s most talented artists, for viewing and for sale.



5005 East Camelback Rd | Phoenix, AZ 85018 | 602.262.4727 | [www.shemerartcenter.org](http://www.shemerartcenter.org)