



SHEMER

art center

5005 E. Camelback Rd. | Phoenix, AZ 85018 | 602.262.4727 | info@shemerartcenter.org



SHEMER
art center

ONLY BLACK & WHITE

An exhibition, juried by Mary Meyer, of ONLY black and white works of art, created in all mediums.

November 3, 2021 – January 6, 2022



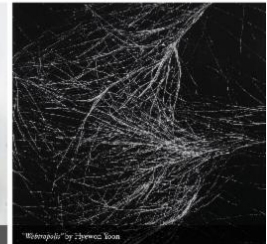
"Tangle" by Nicholas Bernard



"Moss for Papyrus" by David Pendergast



"Lines of Memory" by Diane L. Lopez



"Bishopville" by Steven Cook

December 2021

VIEW OUR CURRENT EXHIBITIONS!

SHEMER HONORS
Mark Klett

and

ONLY
BLACK &
WHITE

Yes, it is December already, and for many of us, this Fall has been so busy we can hardly remember where the last four months have gone!

Like you, we have been busy, and our time has been filled with classes, workshops, lectures, an artist cafe, exhibitions and events! We appreciate everyone who attended our **SHEMER HONORS MARK KLETT** event, and hope everyone will have a chance to see his exhibition and learn more about Mark and his 40-year photography and academic career. We are also enjoying our **ONLY BLACK & WHITE** exhibition, which features artworks created by 42 Arizona artists selected from over 230 entries! Both of these exhibitions are on display through January 6, 2022.

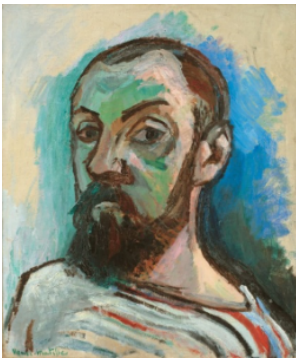
If you are looking for a one-of-a-kind holiday gift be sure to remember the Shemer Art Center Gift Shop! We can help



An exhibition, juried by Mary Meyer, of ONLY black and white works of art, created in all mediums.

**NOW ON
DISPLAY!**
**Nov 3, 2021 -
Jan 6, 2022**

HENRI MATISSE LECTURE SERIES



**PART ONE:
HIS WORKS FROM
1900 TO 1917**

Presented by
Eleanor Sypher, PhD
Eleanor holds a doctorate degree in Greek and Roman civilizations from Columbia University. Join us for these educational lectures, presented with wit and humour!

**Thursday,
January 20, 2022
5:30 - 7 pm**

with wrapping and even shipping, plus the crowds are small and the parking is easy!

Happy Holidays!

GIFT SHOP ARTIST SHOWCASE



2021



Featured Artists

**FIND THE PERFECT GIFT TO GIVE
THIS YEAR IN OUR GIFT SHOP!!**

Thank you to everyone who came to the Gift Shop Artist Showcase this year held on Small Business Saturday!!

OUR PARTICIPATING ARTISTS INCLUDED:

**Sandy Blain
Jackie Brigham
Gerri Dames
Rupali Holmes
Sandra Luehrsen
Robert McLeod
Michael Meacham
Ann Newman
Michelle Rodeman
Christine Sandifur**

OUR ONLINE FEATURED ARTISTS INCLUDE:

**Cathy Bennett
Gerri Dames
Jules Gissler
Julie Gilbert Pollard
Sandra Luehrsen
Judith Rothenstein-Putzer
Colleen Steinberg
Agustin Vargas**

Reserve Your Seat

Be sure to check out artworks from our 2021
Online Featured Artists [HERE!](#)

HOLIDAY HOURS & CLOSURES



The Shemer Art Center
will be closed from
Thursday, December 24, 2021
- January 3, 2022.
We will reopen on Tuesday,
January 4, 2022.

Thank you for 2021!
We hope you have a wonderful
holiday season and look forward
to seeing you in 2022!

THANK YOU FOR YOUR SUPPORT OF SHEMER HONORS 2021!

SHEMER HONORS
Mark Klett

November 19, 2021
6:00 PM

THANK YOU
to everyone who attended
2021 Shemer Honors!

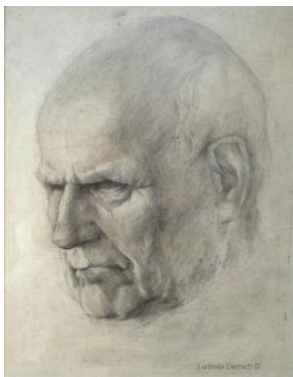
It was a great success and we appreciate all who
supported and attended.

We hope you enjoyed it and will make plans to attend
next year's event, on a date to be determined!

LEARN A NEW SKILL OR SHARPEN AN OLD ONE IN THE NEW YEAR!!

Spaces still available in the following classes:

**DRAWING REALISTIC
PORTRAITS**
w/ Ludmila Demich



Wednesdays,
1 - 4 pm
Jan 12 - Feb 16, 2022

**JEWELRY MAKING
FOR TEENS**
w/ Larry Nisula



Wednesdays,
4:30 - 6:30 pm
Jan 12 - Jan 16, 2022

PAPER COLLAGE
w/ Ludmila Demich



Thursdays,
9:30 am- 12:30 pm
Jan 13 - Feb 17, 2022

**DRAWING WITH PASTEL
AND COLORED PENCIL
FUNDAMENTALS**
w/ Ludmila Demich



**Thursdays,
1 - 4 pm
Jan 13 - Feb 17, 2022**

GELLI PRINTING
w/ Sherry Kimmel



**Wednesdays,
1 - 4 pm
Jan 12 - Feb 2, 2022**

Sign up for a class TODAY!

**SEATS AVAILABLE IN OUR TWO NEW
WORKSHOPS!!**



MINIATURE IKEBANA
w/ Ping Wei

In this workshop students will learn from Ping how to carefully observe the different parts of plants, including their petals, pistils and stamen, fruits, leaves, branches and stems, to make new discoveries of their distinctive appearance. Students will have the opportunity to make several Ikebana arrangements (five or more) in this way of careful observation, and learn how to display them on a base plate, a tray, a piece of



THREADPAINTING LANDSCAPES
w/ Kate Hughes

In this two-part workshop, Kate will introduce students to the basics of landscape threadpainting. As the stitching begins, she will share both the traditional and non-traditional techniques used to create these layered, textured artworks, as well as share images and videos from her vast portfolio of landscape embroideries to inspire the class as they create their own threadpainted creation.

Japanese paper, or a table center in a way that a movement or a flow is felt by the way they are arranged.

**Saturday, January 15, 2022
10:00 am -12:00 pm**

Sign up TODAY!

**Saturday, January 22, 2022,
10 am - 2 pm
& Saturday, January 29, 2022
10 - 2 pm**

Sign up TODAY!

JOIN OUR LIST!

Want to receive information about our upcoming classes, workshops, lectures, artist cafés, exhibitions and events?

Take one minute and click below to join our mailing list and ensure you are receiving the latest information about activities coming up soon at the Shemer Art Center!

Join Our Mailing List

DECEMBER MEMBERSHIPS NOW DUE!

ARE YOU A MEMBER OF THE SHEMER ART CENTER?

If you became a member of the Shemer Art Center any time before DECEMBER 2021, now is a great time to renew your membership and show your support!

Click [HERE](#) to choose a membership level. If you are not sure of your current membership status, give us a call and we will check for you.

THANK YOU!

As we all know, 2021 has been a challenging year, perhaps even more so than 2020, and our team here at Shemer Art Center, including our amazing instructors, have all been working diligently to continue delivering the very best in classes, workshops, lectures, artist cafes, exhibitions and events. As you continue to value and treasure your experiences at the Shemer, we ask you to keep us in mind as you are considering making your year-end donations.

If you are interested in contributing to the long-term operations of the Shemer Art Center perhaps consider Shemer in your directives to honor someone or continue a specific service with a gift given through a will or living trust. We are also asking for support of our Expansion & Legacy Campaign, on which we are working to add a new building for more and larger classes, and give us the chance to hire and inspire more artists of all ages!

Your weekly experience here at Shemer, as part of the Shemer family, is what we treasure and value the most! Thank you for the trust you put in us and for your continued referrals! We will be closed the week between Christmas and New Years, and we look forward to having a few days off to spend with our families and re-energize. From our families to yours, we wish you the happiest of holidays!

Shonna James, President & Executive Director

